

AUSTHINK
CONSULTING

Investigating Hypotheses with Hypothesis Mapping

A one-day workshop improving skills in hypothesis generation, evaluation and testing, based on hypothesis mapping techniques.

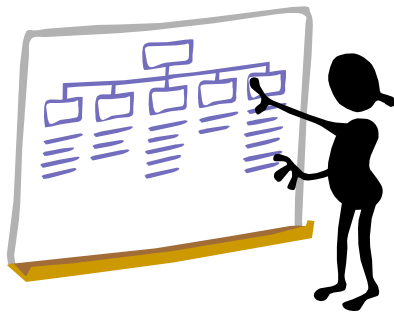
Hypothesis Investigation



Hypothesis investigation is attempting to determine “what is going on” in some situation by assessing various hypotheses or conjectures. Most investigation, in areas as diverse as scientific research and intelligence analysis, is hypothesis-based.

Hypothesis investigation is comprised of three main activities:

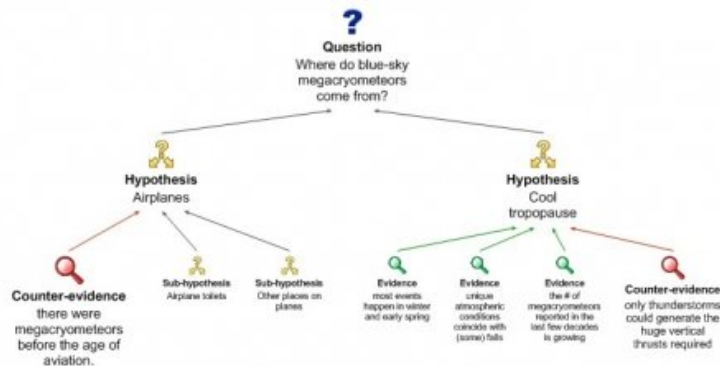
- Hypothesis generation - coming up with hypotheses;
- Hypothesis evaluation – assessing plausibility of hypotheses given the available evidence; and
- Hypothesis testing – seeking further evidence to aid evaluation.



Poor hypothesis investigation can be costly, and sometimes even catastrophic. Unfortunately it is often done poorly, due to factors such as cognitive biases and inadequate training.

Hypothesis investigation can be improved through the use of structured methodologies such as hypothesis mapping.

Hypothesis Mapping



What is it?

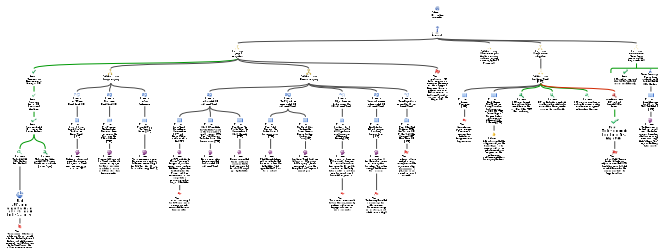
Hypothesis mapping is a systematic approach to hypothesis investigation based on drawing diagrams or “maps.” A hypothesis map lays out the various hypotheses, arguments and evidence in a simple format. It exploits visualisation to help our brains organise, comprehend and evaluate the complex tangle of possibilities and information.

Hypothesis mapping is an alternative to the well-known “Analysis of Competing Hypotheses” methodology widely used in intelligence analysis.

Benefits of Hypothesis Mapping

First and foremost, hypothesis mapping promises to improve “hit rate,” i.e. help you draw the right conclusion more often.

- Makes the hypothesis investigation process more efficient
- Facilitates sharing and communication of thinking
- Makes conclusions more defensible and accountable



Workshop Outline



Hands on

The workshop is conducted in a “hands-on” manner, using the bCisive software and numerous exercises, leaving participants able to engage in hypothesis mapping as soon as they return to their desks.

Content

The workshop covers the core concepts and practical skills involved in hypothesis mapping:

- Basics – key concepts and basic structures
- General guidelines for good hypothesis mapping
- Some common pitfalls
- Using the bCisive software
- Practicalities

Session Structure

The workshop is conducted in four sessions of approx. 90-105 minutes with breaks for morning tea, lunch, and afternoon tea.

Generally the workshop runs from 9.00-5.00 on a single day. However alternative arrangements are possible.



About Austhink Consulting

Austhink Consulting is a critical thinking and communications consultancy based in Melbourne, Australia.

Since 2000 we have been providing facilitation, training and consulting services to organisations in all sectors (government, professional, corporate and non-profit) in Australia and overseas, particularly the US.

Our unique expertise lies in using our distinctive mapping techniques to improve the clarity and rigour of thinking about complex issues.

Our techniques are based on extensive original research at the University of Melbourne. The techniques are now being adopted by organisations around the world.

Current and recent clients include Rio Tinto, ANZ, Vanguard, Green Cross, ANU, and the Victorian Department of Sustainability and Environment.

In 2004 we set up a sister company, Austhink Software to develop tools for the diagrammatic display of complex reasoning in both education and the workplace. Austhink Software has released the bCisive and Rationale packages. bCisive 2 is the main tool used in Austhink Consulting activities.



Pricing – One Day Workshop

Price Structure

The fee for Austhink Consulting one-day training workshops is \$795 (ex. GST) per participant (min 6 participants). The fee includes:

- Prior consultation with customer
- Preparation and Organisation (e.g. facilities)
- Facilitation by an appropriate number of Austhink staff
- Training materials, inc. workshop booklet for participants
- Evaluation and follow-up with customer

Terms and Conditions

Key points

1. Additional direct expenses (travel, facility fees, catering) charged at cost plus 10% for overheads.
2. 50% deposit paid in advance to secure booking; balance payable on delivery.

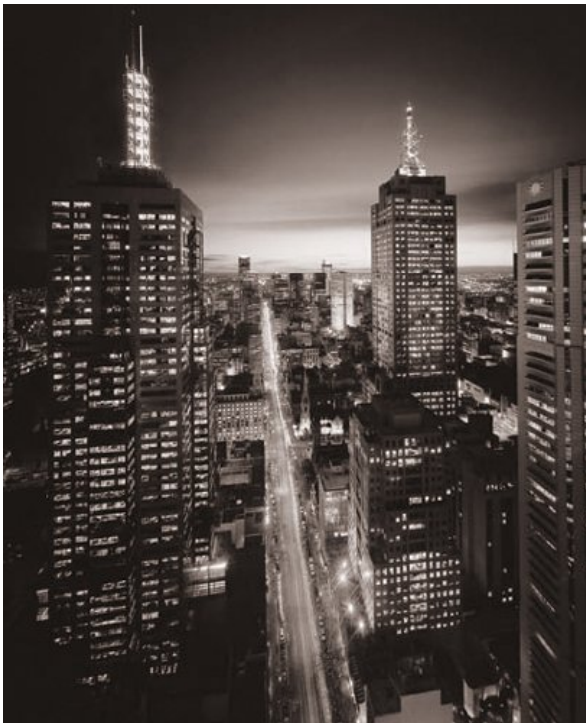
For more information please ask for our full Terms and Conditions.

Special Arrangements

We recognize that many organisations have unique constraints in relation to training expenditures. Austhink is frequently able to make special arrangements to accommodate these constraints. Please feel free to discuss your needs with one of our Principal Consultants.



Contacting us



Austhink Consulting
Level 50, 120 Collins St
Melbourne VIC 3000, Australia
Australia
Ph +61 (0)3 9225 5215
Fax +61 (0)3 9225 5050
info@austhinkconsulting.com
ABN 15 081 992 547

To reach our Principal Consultants directly:

Dr. Tim van Gelder
+61 (0)438 131 266
tvgausthink.com

Dr. Paul Monk
+61 (0)433 128 818
pmm@austhink.com

Jane Lewis
+61 (0)411 759 951
jml@austhink.com